

Surface Stress Meter

model: FSM-6000LEUV

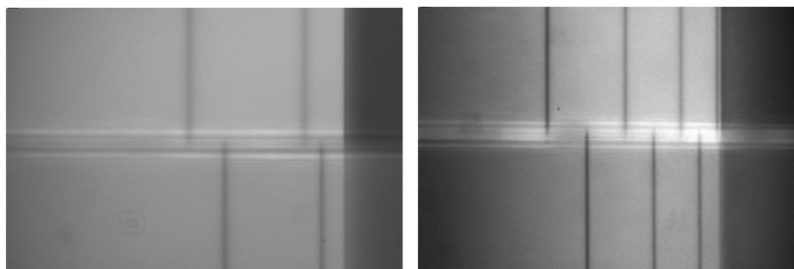
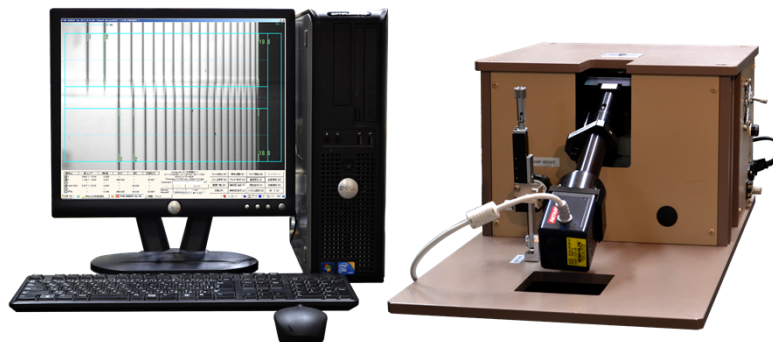
Price: Standard JPY2,650,000
Premium JPY2,950,000

Convenient to measure DOL < 10um

The FSM-6000LE series is developed for measuring the surface stress of glass using a PC.

Chemical and thermal tempering is increasing the areas of glass application in most of industries.

The optical waveguide effect in the surface layer of tempered glass is a useful tool for measuring surface stress for quality and process control purpose.



Wavelength: 589nm

Wavelength: 365nm

The measurement algorithm is different between the case of less than 3 fringes and the case of more than 3 fringes. Both data is not connected straightly.

Using short wavelength, fringe number increase. It brings straight data.

- Output measurement data
 - Measure the double ion exchange glass
 - Display of cross section stress distribution
 - Able to choose from the two types of software (FsmV Standard or Premium)
- Please see the software catalogue for the details

Option

- Measure glass thickness automatically using glass Thickness Meter
- Measure surface stress in wide view using Wide Angle Camera
- Auto dispenser

* Please see the each catalogue for the details

Specification

Range:	Stress 0-1000Mpa Depth 5-50µm
Accuracy:	±20Mpa
Light source:	LED 365±10nm
Sample:	chemical tempered glass, thermal tempered glass
Sample size:	Flat over 10×10mm
OS:	Windows 10
Software:	FsmV Standard/Premium
Size:	280*600*220mm (head), 290*93*292mm (PC), 512*52*304 (monitor)
Weight:	14kg (head), 6kg (PC), 3kg (monitor)

Orihara Industrial Co., Ltd.

5-47-15 Higashi-Ikebukuro Toshima-ku Tokyo Japan 170-0013

TEL 03-3985-9531 FAX 03-3985-9532

<http://www.orihara-ss.co.jp> e-mail orihara@orihara-ss.co.jp